

# 10 Pathria Facet Joint Disease Severity Grade

Pathria M, Sartoris DJ, Resnick D (1987) Osteoarthritis of the facet joints: accuracy of oblique radiographic assessment. *Radiology*; 164:227-230.

## SCALE DESCRIPTION

Using transaxial computed tomography or oblique x-rays facet joint disease can be graded according to the following:

- Grade 0—Normal
- Grade 1—Joint space narrowing
- Grade 2—Narrowing plus sclerosis or hypertrophy
- Grade 3—Severe osteoarthritis with narrowing, sclerosis, and osteophytes

### Interpretation:

The higher the grade, the greater the severity.

## SCALE ILLUSTRATION

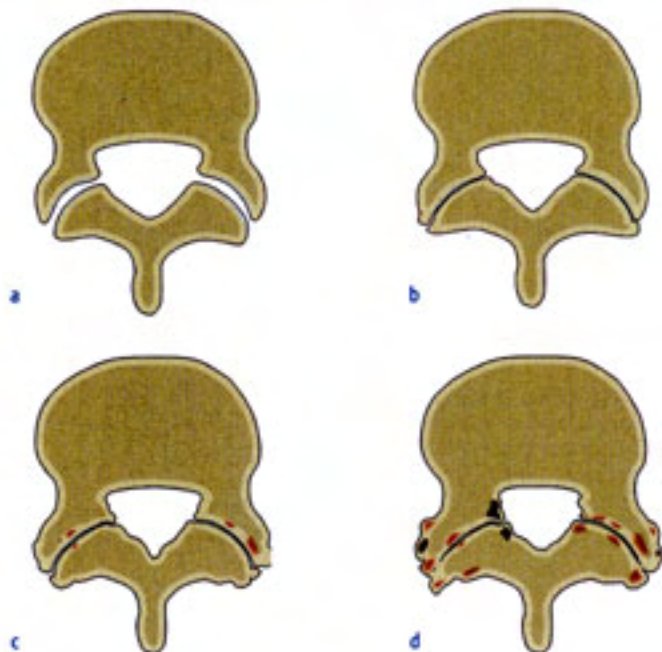


Fig 5.4.2.10-1a-d

- a Grade 0—Normal.
- b Grade 1—Joint space narrowing.
- c Grade 2—Narrowing plus sclerosis or hypertrophy.
- d Grade 3—Severe osteoarthritis with narrowing, sclerosis, and osteophytes.